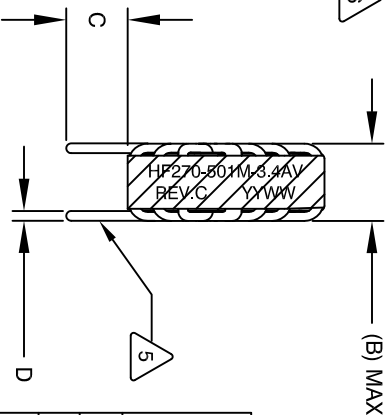
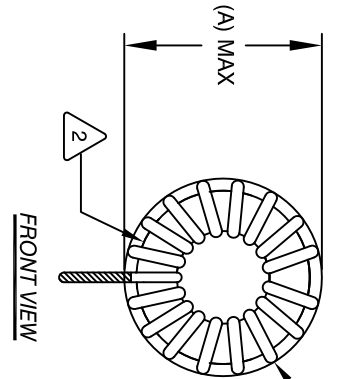
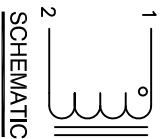


The information contained in this drawing is the sole property of CMS Coil Winding Specialist. Any reproduction in part or whole without written permission of CMS Coil Winding Specialist is prohibited.

DIMENSIONAL TOLERANCES					
INCHES (MM)					
A	B	C	D	X	
MAX	MAX	TYP	REF	REF	REF
1.30 [33.02]	0.65 [16.51]	0.75 [19.05]	0.032 [0.91]	0.60 [15.24]	

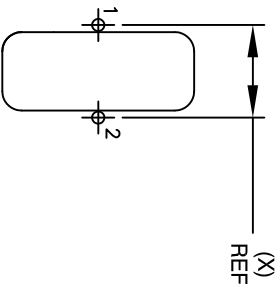
REVISION HISTORY				SIGN & DATE		
REV	ECN	DESCRIPTION	BY	DATE	CHK	DATE
B	—	UPDATED SPEC.	TDK	3/09/04	JLAV	3/9/04
C	—	UPDATED SPEC.	TN	07/15/2020	JL	07/15/2020



DC BIAS TABLE		
DC BIAS (AMP)	L@ 1KHz (REF)	
0	502uH	
1	497uH	
2	487uH	
3	470uH	
3.4	466uH	

- BUILD TO ROHS COMPLIANCE AND LEAD FREE.
- USING A PERMANENT MARKING METHOD
MARK PART NUMBER, REVISION AND DATE CODE
WRAP INDUCTOR WITH 3M # 79 OR EQUAL
- (I.E. COIL MUST REST FLAT ON PCB). LEADS MUST BE TANGENT TO THE CORE
REMOVE INSULATION AND TIN LEADS 0.75 INCH, FLUSH WITH THE COIL EDGE
- WIND COILS EVENLY SPACED AROUND THE CORE
CONSTRUCTION:

THESE SPECIFICATIONS ARE BASED ON LOW RIPPLE CURRENT
WEIGHT: 50 GRAMS TYPICAL
INTERWINDING CAPACITANCE = 56pF TYP @ SRF
SRF = 345KHz TYP
 $|Z| = 59.5 \text{ K}\Omega\text{-OHMS TYP @ SRF}$
RECOMMENDED AMBIENT OPERATING TEMP: -40°C TO 155°C
HI-POT TEST FOR WINDING TO CORE ISOLATION = 500VDC MIN.
CURRENT RATING : 3.4 AMPS, 40°C TEMP. RISE WITH SOME AIR FLOW
DCR = 131.0 MILLI-OHMS MAX.



MOUNTING HOLES PATTERN

- SPECIFICATIONS: @ 25°C:
WIRE: UL RECOGNIZED 200°C RATED MAGNET WIRE
CORE: POWDERED TOROIDAL CORE, CMS BYTEMARK OR OTHER APPROVED PART
- MATERIAL: UL RECOGNIZED 94V-0 FOR FLAMMABILITY, RATING CLASS B (130°C MIN.) REQUIRED
ANY TOLERANCE. THIS DIM. CAN VARY A LITTLE FROM PART TO PART.
*TYP IN DIM. TABLE REFERS TO A NON-CRITICAL TYPICAL (AVERAGE) DIM. WITHOUT
NOTES: UNLESS OTHERWISE STATED, READ NOTES FROM BOTTOM UP.
CAGE CODE: 5DMEZ

UNLESS OTHERWISE SPECIFIED	
DIMENSIONING AND TOLERANCE PER ANSI Y14.5M AND [DIMETERS]	
TOLERANCE INCHES: .XXX=±.005 .XX=±.015 .X=±.030 .XXX=±.127 .XX=±.38 .X=±.076	
ANGLE PROJECTION	
DO NOT SCALE DRAWING	

CODE	IDENT	MFG. P/N	DESCRIPTION	ITEM NO.
PARTS LIST				
AUTOCAD	X			
SOLIDWORKS				
SIGN	DATE			
TDK	2/8/04			
JLAV	2/9/04			
KSUM	3/5/04			
JLAV	3/6/04			
SIZE	ENG. NO.			
B	HF270-501M-3.4AV			
SCALE	2=1			
SHEET	1	OF 1		

COWS COM, INC
www.cowls.com
CWS Coil Winding Specialist.
1510 E. Edinger Ave.
Unit B, Santa Ana, CA. 92705

TITLE: TOROIDAL POWER INDUCTOR
500uH, 3.4 Amps, Vertical